

Hatchite, $\text{TiPbAgAs}_2\text{S}_5$



2012/08/24 14:18 NL D4.8 x250 300 um

Color:	Grey	Find Date:	
Paragenesis:	Smithite	Coll.:	M. Ecker
Photo:	P. Roth	Courtesy:	Portmann Instruments AG
Remarks	Strange 'backbones'		

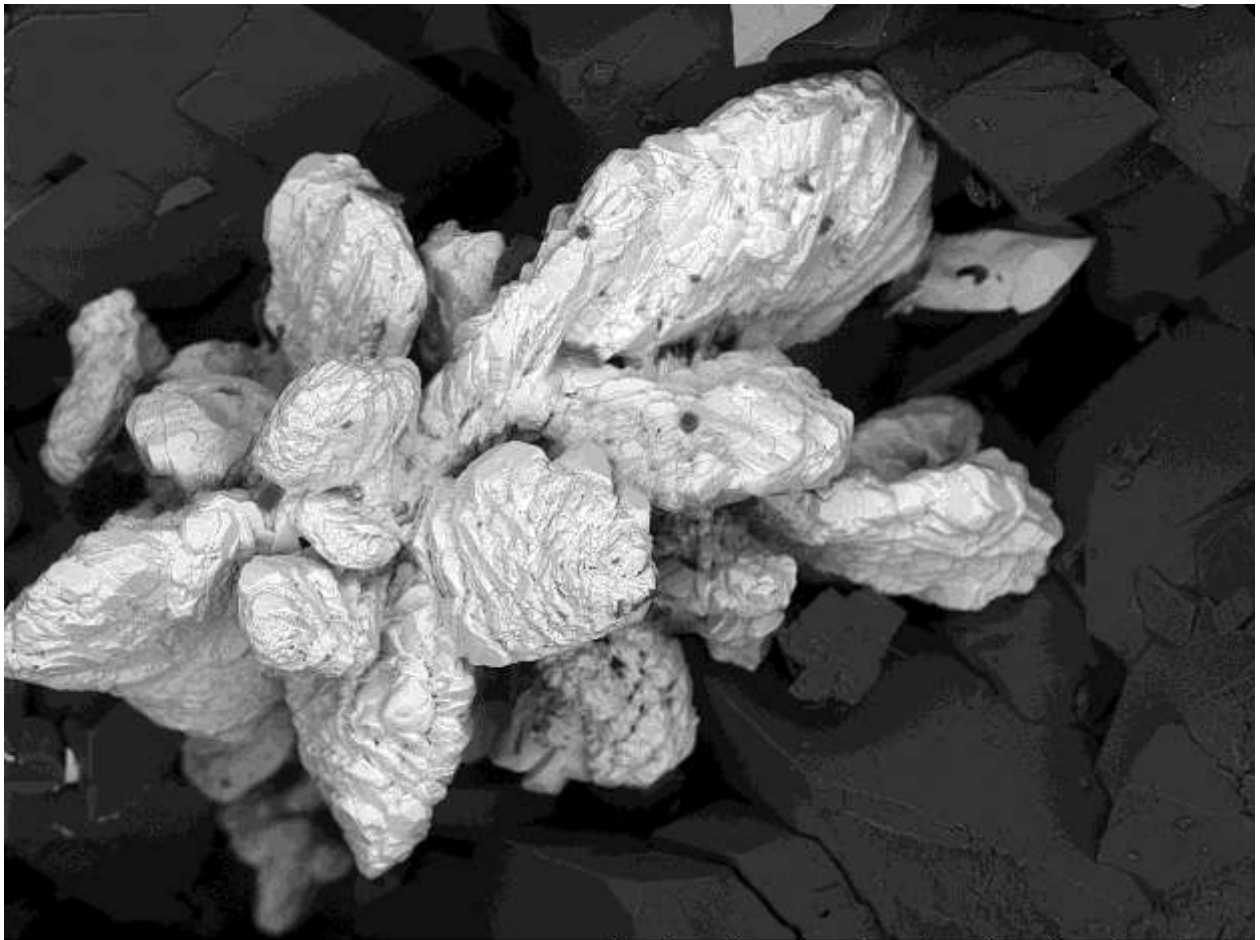
Hatchite, $\text{TlPbAgAs}_2\text{S}_5$



2012/08/24 16:08 AL D4.7 x500 200 um

Color:	Grey	Find Date:	
Paragenesis:	Gabrielite	Coll.:	M. Ecker
Photo:	P. Roth	Courtesy:	Portmann Instruments AG
Remarks	Both the 'fir trees' and the aggregate in the background are hatchite		

Hatchite, $\text{TiPbAgAs}_2\text{S}_5$



2012/08/24 15:42 AL D5.0 x300 300 um

Color:	Grey	Find Date:	
Paragenesis:	N/A	Coll.:	M. Ecker
Photo:	P. Roth	Courtesy:	Portmann Instruments AG
Remarks			