

Jentschite, $\text{TiPbAs}_2\text{SbS}_6$



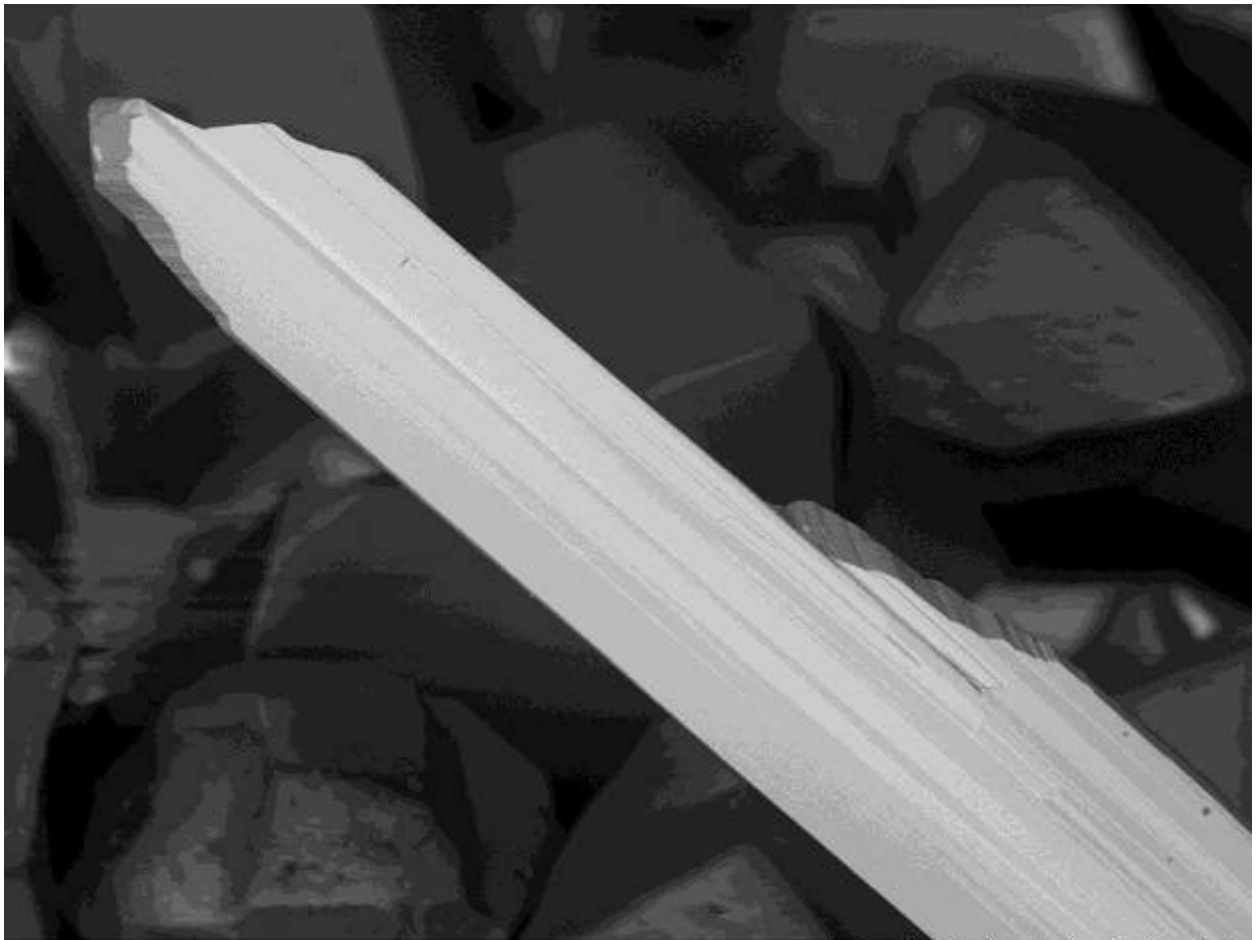
TM3000_0027

2012.11.23 16:54 N

300 um

Color:	Black	Find Date:	
Paragenesis:	Realgar	Coll.:	R. Cannon
Photo:	P. Roth	Courtesy:	Portmann Instruments AG
Remarks	Nice monoclinic terminations		

Jentschite, **TlPbAs₂SbS₆**



TM3000_0027

2013/09/12 13:18 A

D11.4 x600 100 μm

Color:	Black	Find Date:	
Paragenesis:		Coll.:	T. Raber
Photo:	T. Raber	Courtesy:	Portmann Instruments AG
Remarks			