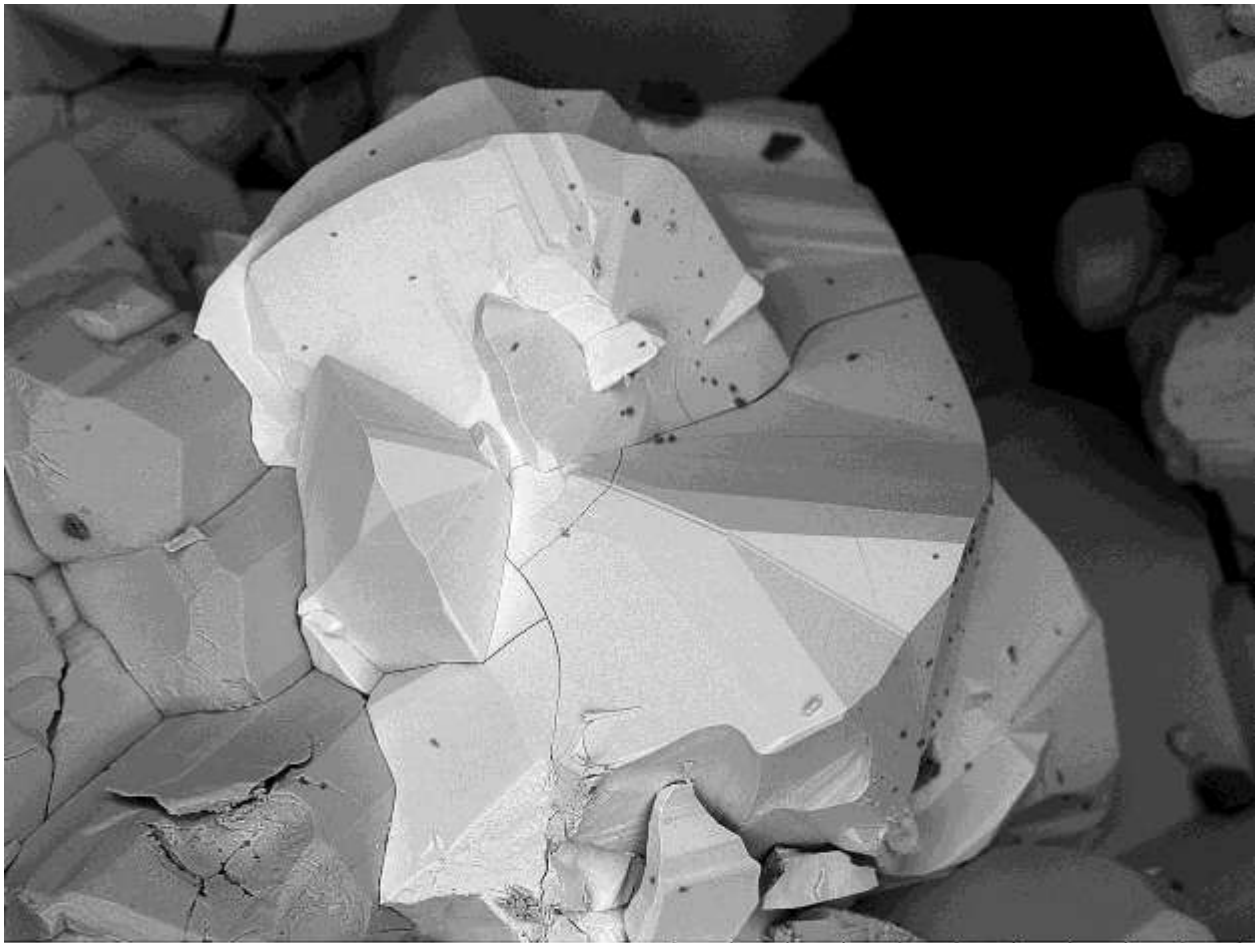


Seligmannite, PbCuAsS_3

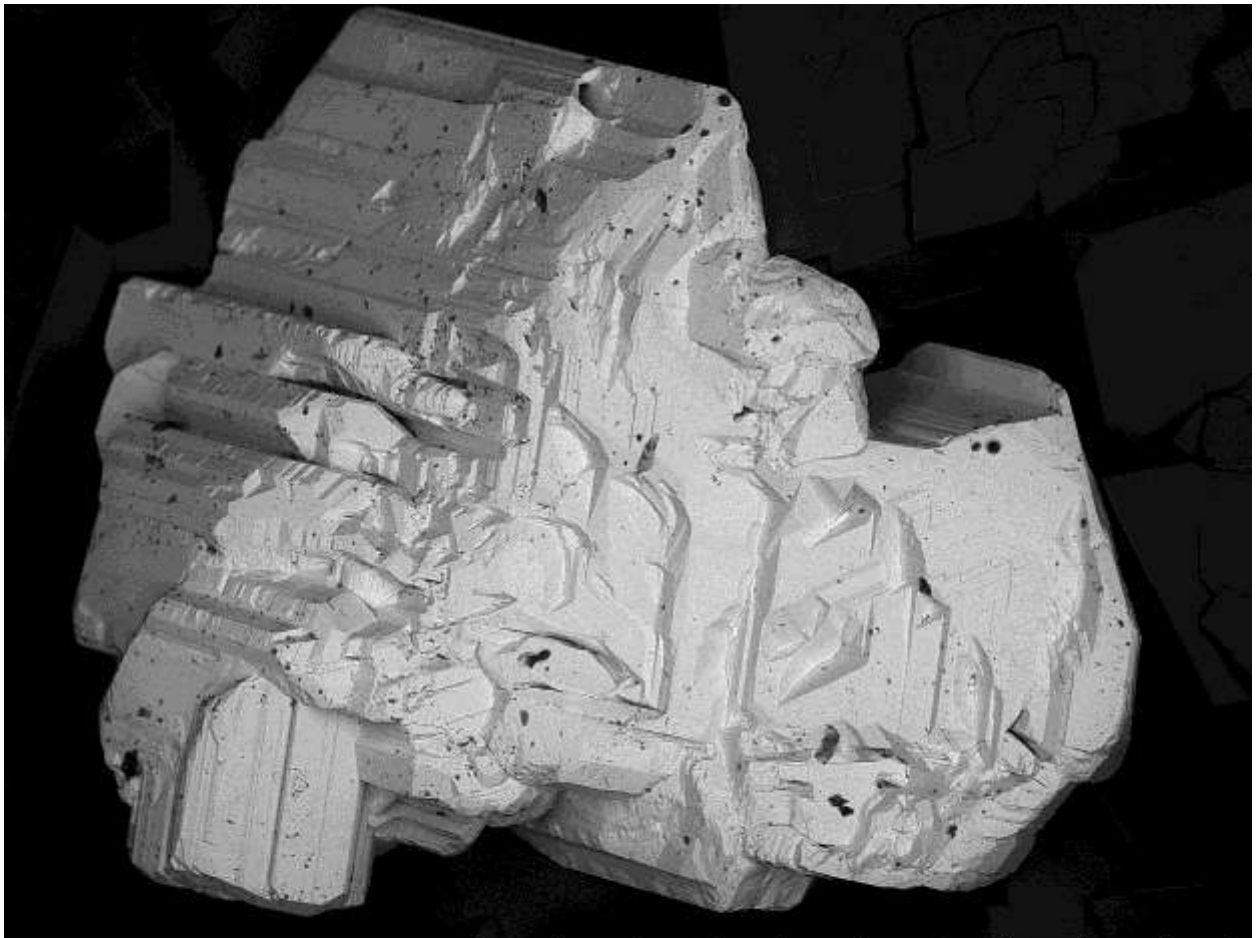


TM3000_0060

2013.02.08 08:45 NL D5.5 x250 300 um

Color:	Black	Find Date:	2012
Paragenesis:	Realgar	Coll.:	R. Meier
Photo:	P. Roth	Courtesy:	Portmann Instruments AG
Remarks	Two different twins laws are probably involved here		

Seligmannite, PbCuAsS_3

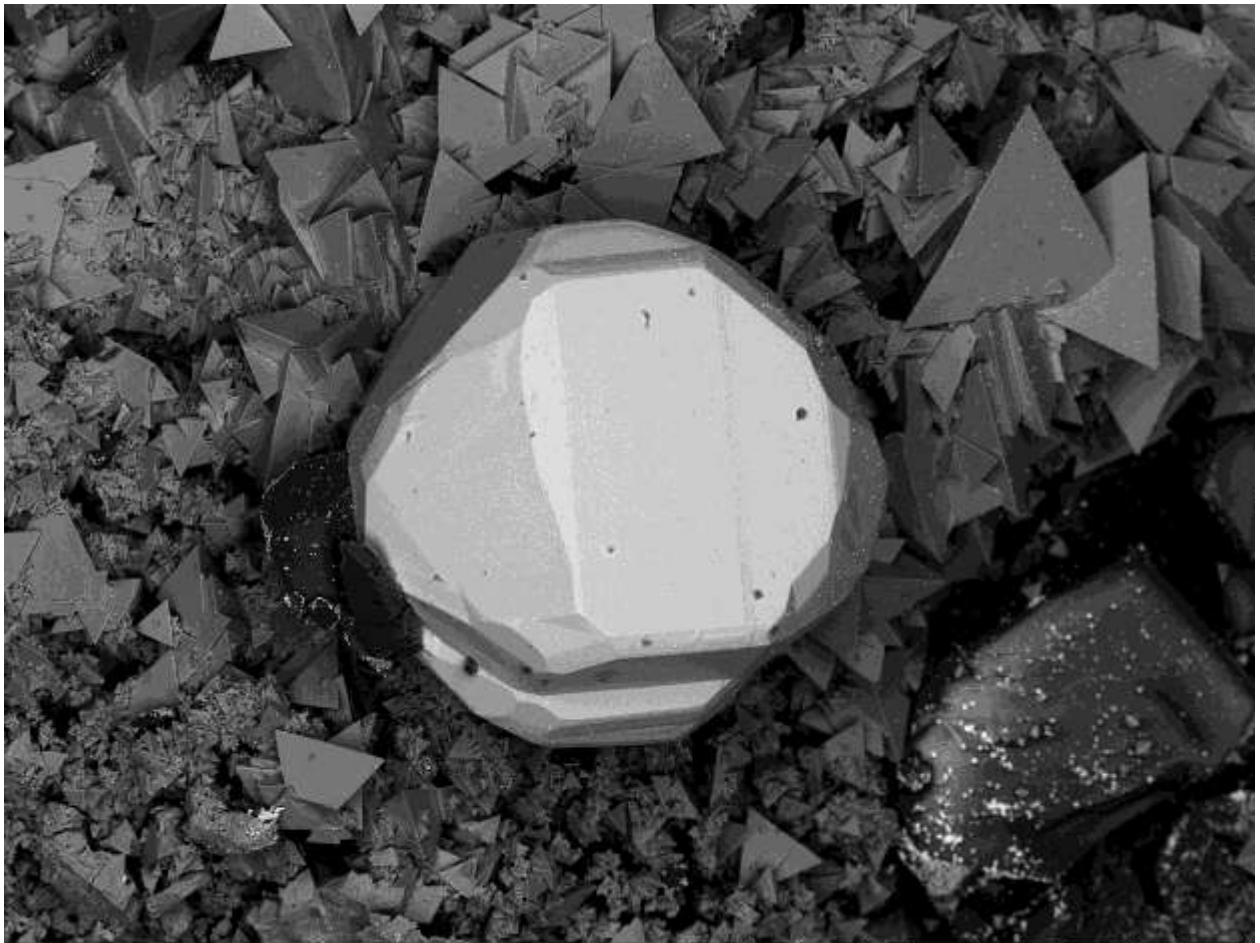


TM3000_0061

2013.02.08 09:11 NL D7.6 x200 500 um

Color:	Bronze	Find Date:	2012
Paragenesis:		Coll.:	R. Meier
Photo:	P. Roth	Courtesy:	Portmann Instruments AG
Remarks	Unusual form and color for this crystal		

Seligmannite, PbCuAsS_3

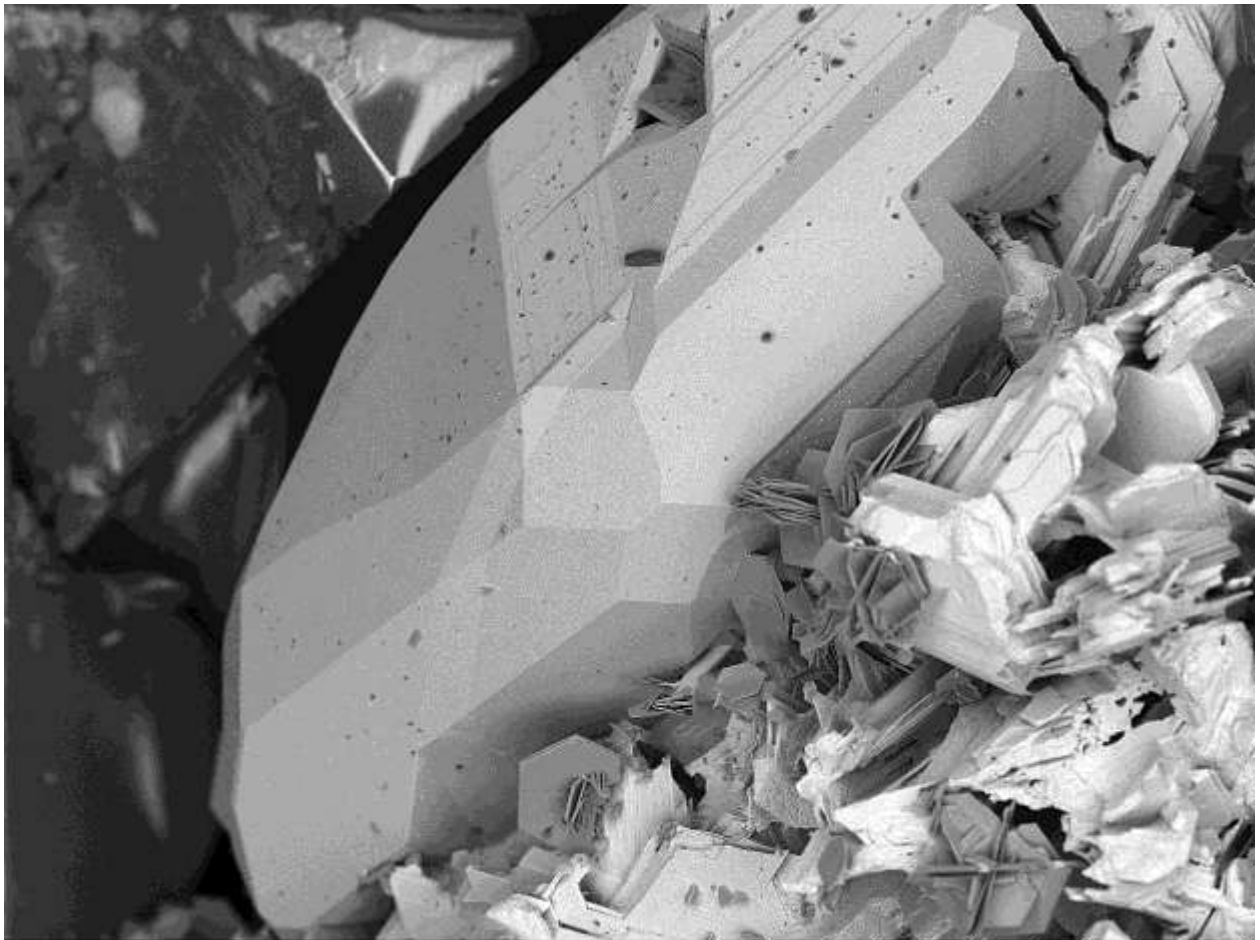


TM3000_0048

2013/09/13 15:15 A D9.9 x400 200 μm

Color:	Black	Find Date:	1999
Paragenesis:	Tennantite, sartorite, realgar	Coll.:	R. Cannon
Photo:	P. Roth	Courtesy:	Portmann Instruments AG
Remarks	Isometric, possibly twinned crystal		

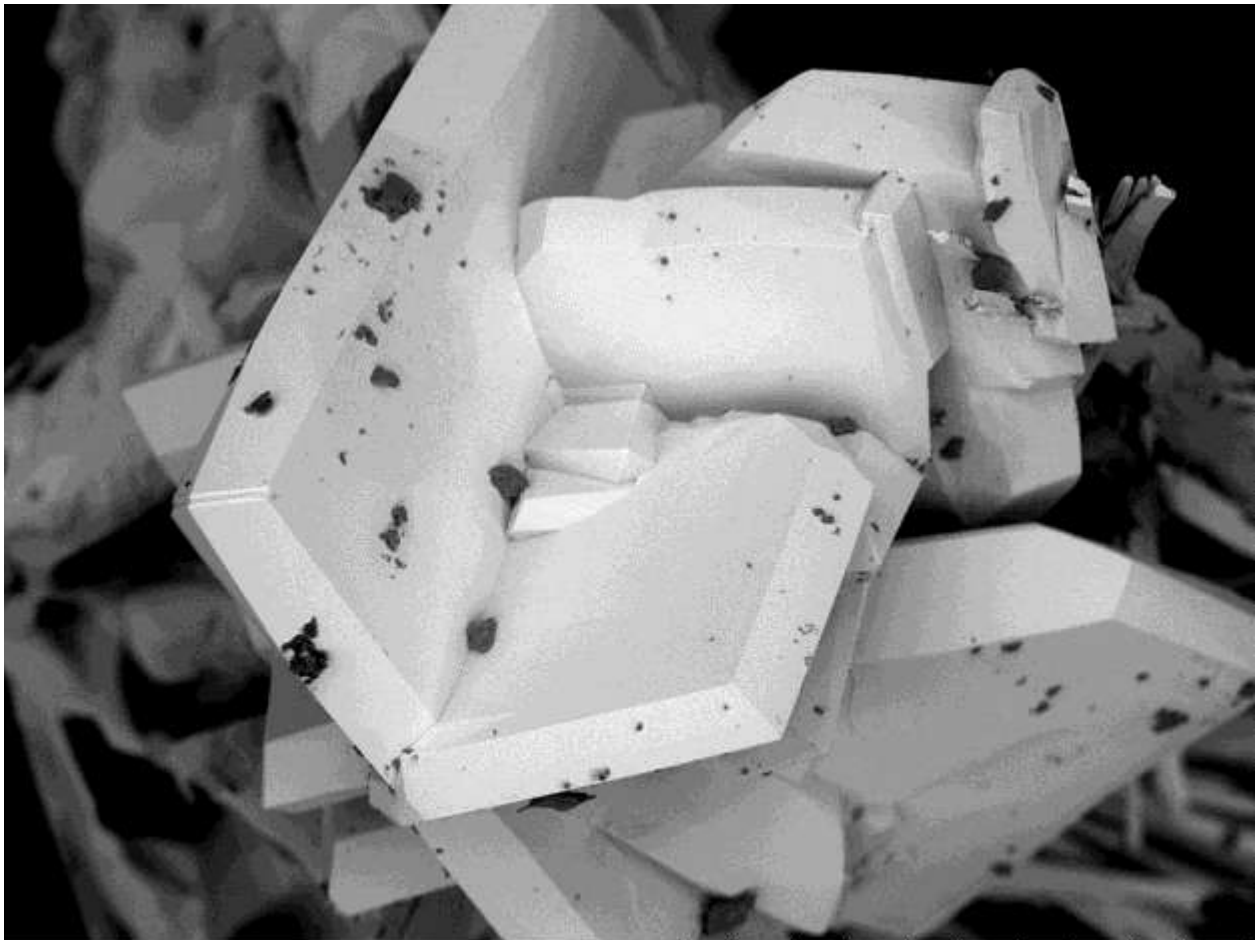
Seligmannite, PbCuAsS_3



2012/09/14 16:18 N D6.0 x250 300 um

Color:	Black	Find Date:	14.07.1997
Paragenesis:	Wurtzite, jordanite	Coll.:	P. Roth
Photo:	P. Roth	Courtesy:	Portmann Instruments AG
Remarks	In the jordanite paragenesis		

Seligmannite, PbCuAsS_3



2012/05/18 13:21 F L D3.8 x800 100 um

Color:	Dark grey	Find Date:	N/A
Paragenesis:	Jentschite, smithite, realgar	Coll.:	P. Roth
Photo:	P. Roth	Courtesy:	Portmann Instruments AG
Remarks	Unusual tabular habit with two different twins laws		