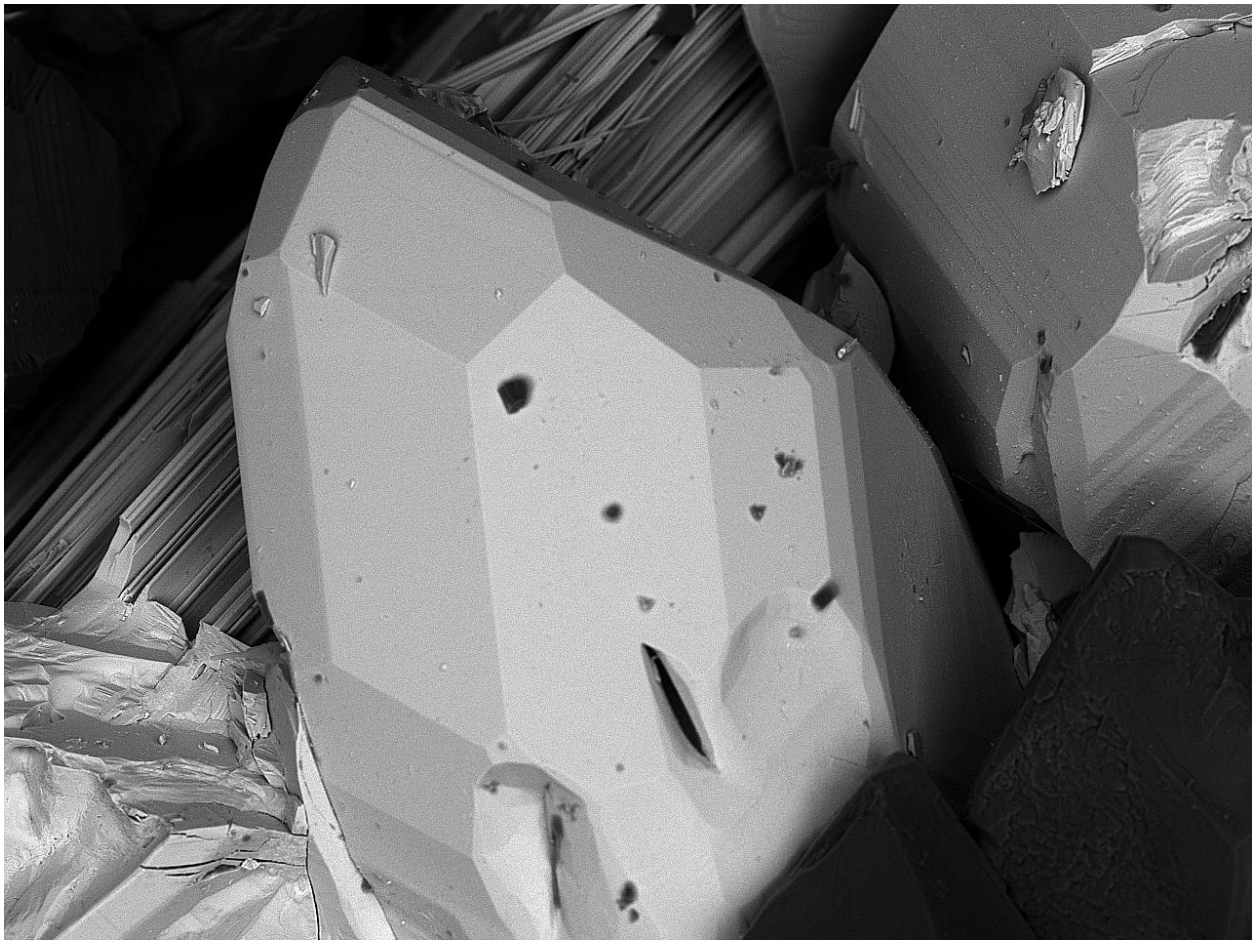


## Wallisite, $\text{TiPbCuAs}_2\text{S}_5$

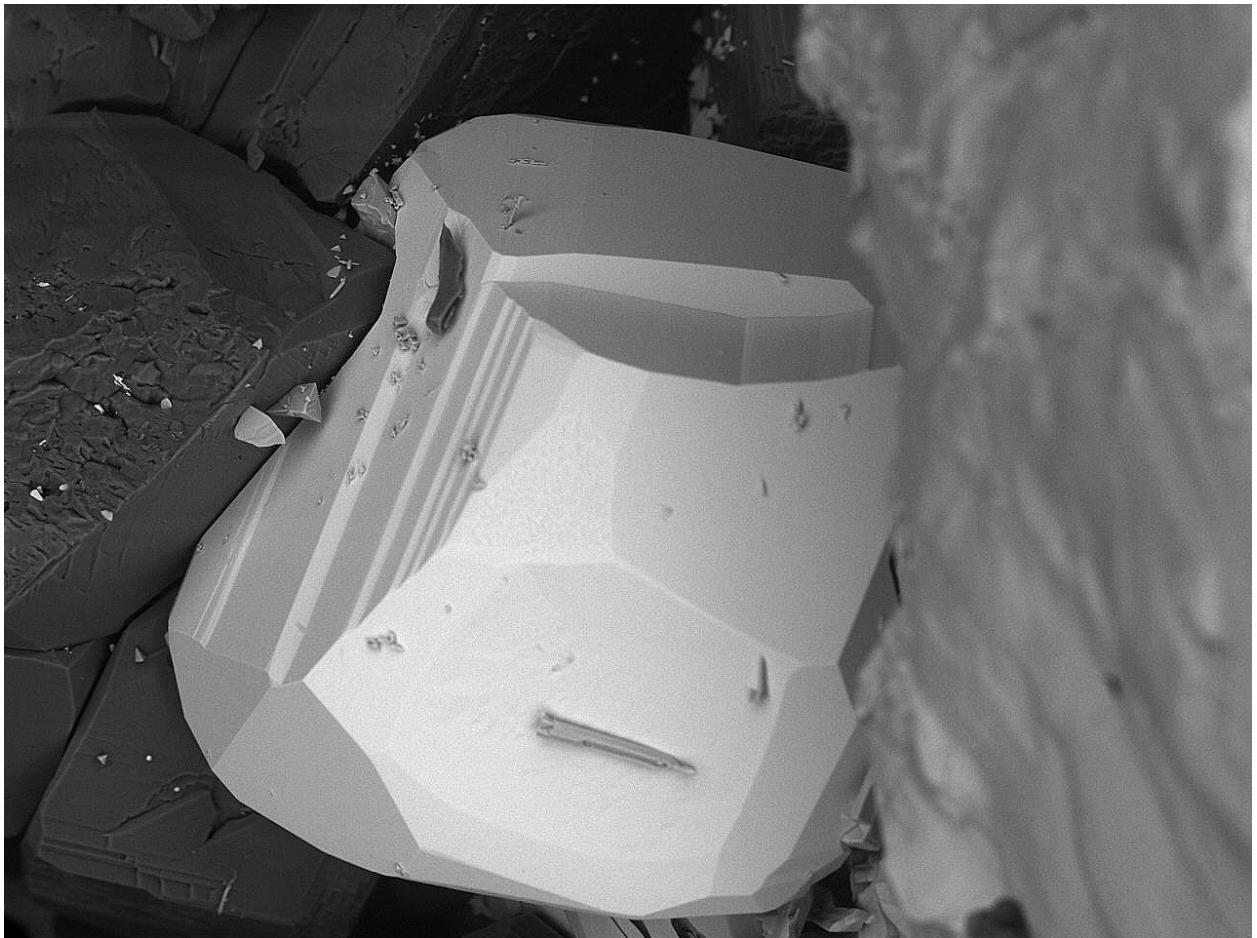


TM3000\_0025

2013/09/12 12:19 A D8.4 x500 200  $\mu\text{m}$

Color:	Steel-grey	Find Date:	15.5.1999
Paragenesis:	Realgar	Coll.:	G. Favreau
Photo:	P. Roth	Courtesy:	Portmann Instruments AG
Remarks	Wallisite ~ 94%		

## Wallisite, $\text{TiPbCuAs}_2\text{S}_5$



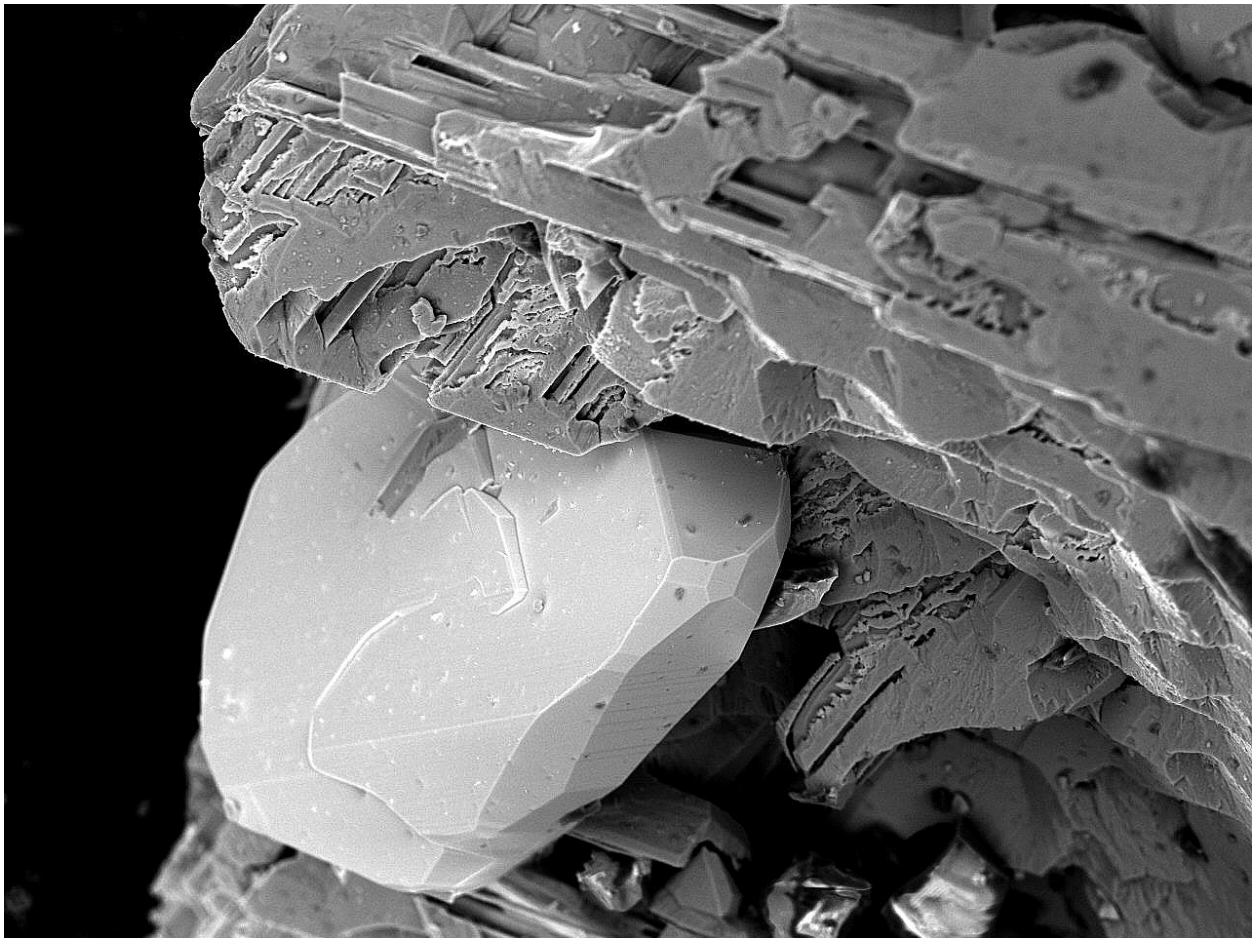
TM3000\_0063

2013.02.08 10:12 NL D4.7 x500 200 um

Color:	Dark grey	Find Date:	2012
Paragenesis:	Sinnerite	Coll.:	P. Roth
Photo:	P. Roth	Courtesy:	Portmann Instruments AG
Remarks	Wallisite ~ 97%		



## Wallisite, $\text{TlPbCuAs}_2\text{S}_5$



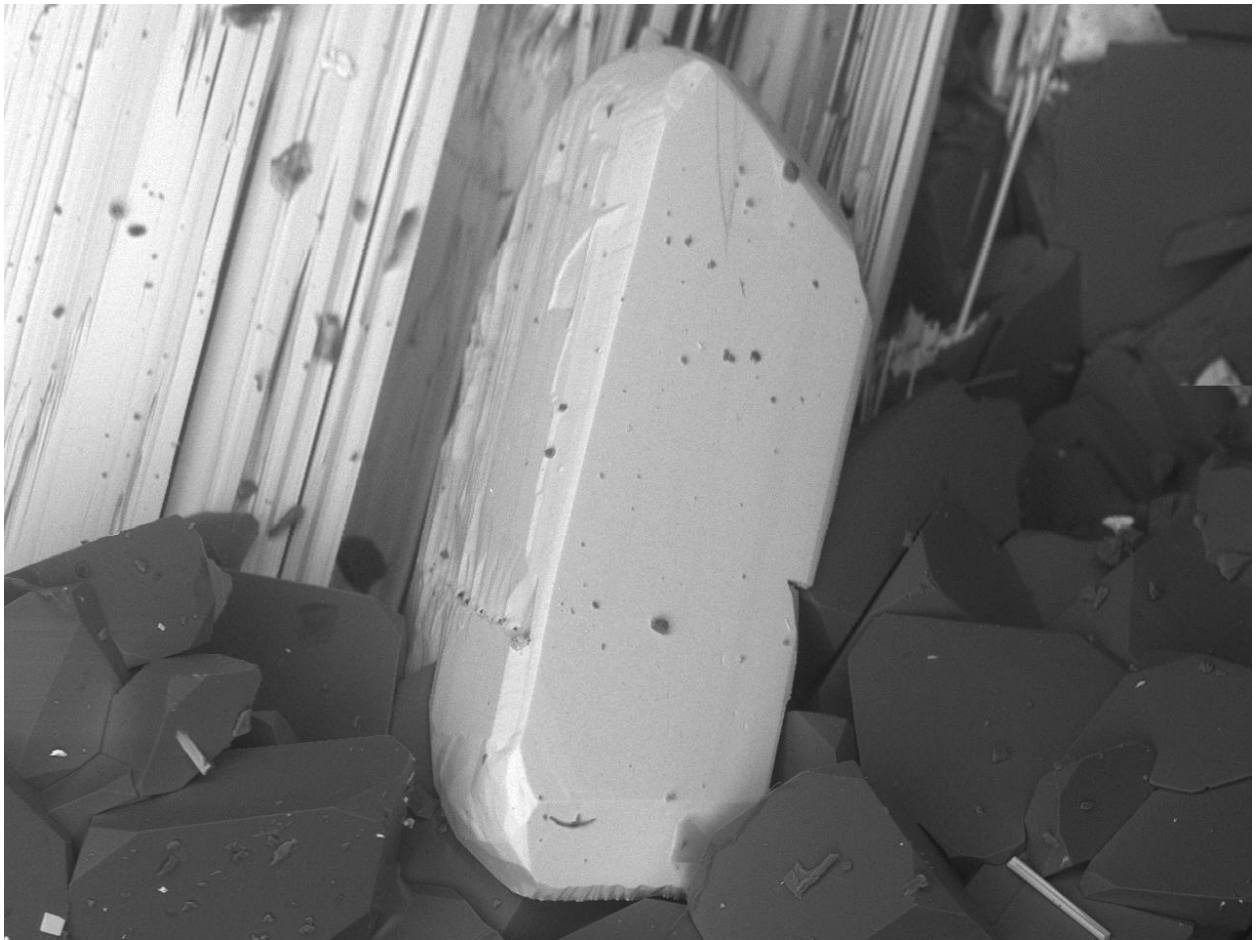
TM3000\_0023

2012.11.23 15:28 N

100 um

Color:	Dark grey	Find Date:	1994
Paragenesis:	Sinnerite	Coll.:	P. Roth
Photo:	P. Roth	Courtesy:	Portmann Instruments AG
Remarks	Wallisite ~ 52%		

## Wallisite, $\text{TlPbCuAs}_2\text{S}_5$



2012/06/15 15:11 AL D9.9 x250 300 um

Color:	Black	Find Date:	1993, L 25.116
Paragenesis:	Hutchinsonite, realgar	Coll.:	T. Raber
Photo:	T. Raber	Courtesy:	Portmann Instruments AG
Remarks	Wallisite ~ 93%		