

## Lengenbachite, $\text{Pb}_{18}\text{Ag}_4\text{Cu}_2\text{As}_{12}\text{S}_{39}$



TM3000\_0011

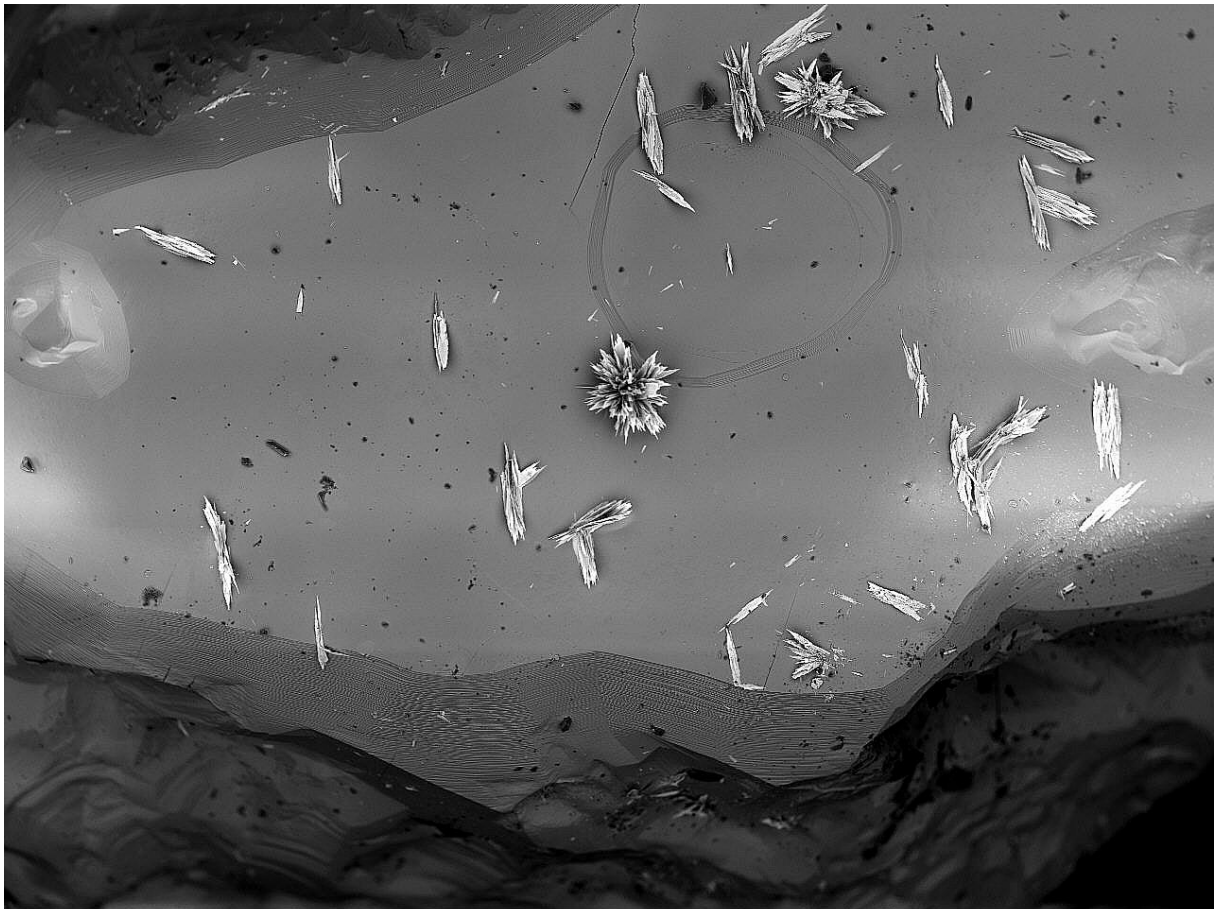
2012.11.23

13:44 H

500 um

Color:	Black	Find Date:	1998
Paragenesis:	Pyrite	Coll.:	R. Cannon
Photo:	P. Roth	Courtesy:	Portmann Instruments AG
Remarks	Probably twinned		

## Lengenbachite, $\text{Pb}_{18}\text{Ag}_4\text{Cu}_2\text{As}_{12}\text{S}_{39}$



TM3000\_0000

2012.11.23 12:46 H

1 mm

Color:	Black	Find Date:	1995
Paragenesis:	Sphalerite	Coll.:	R. Cannon
Photo:	P. Roth	Courtesy:	Portmann Instruments AG
Remarks			