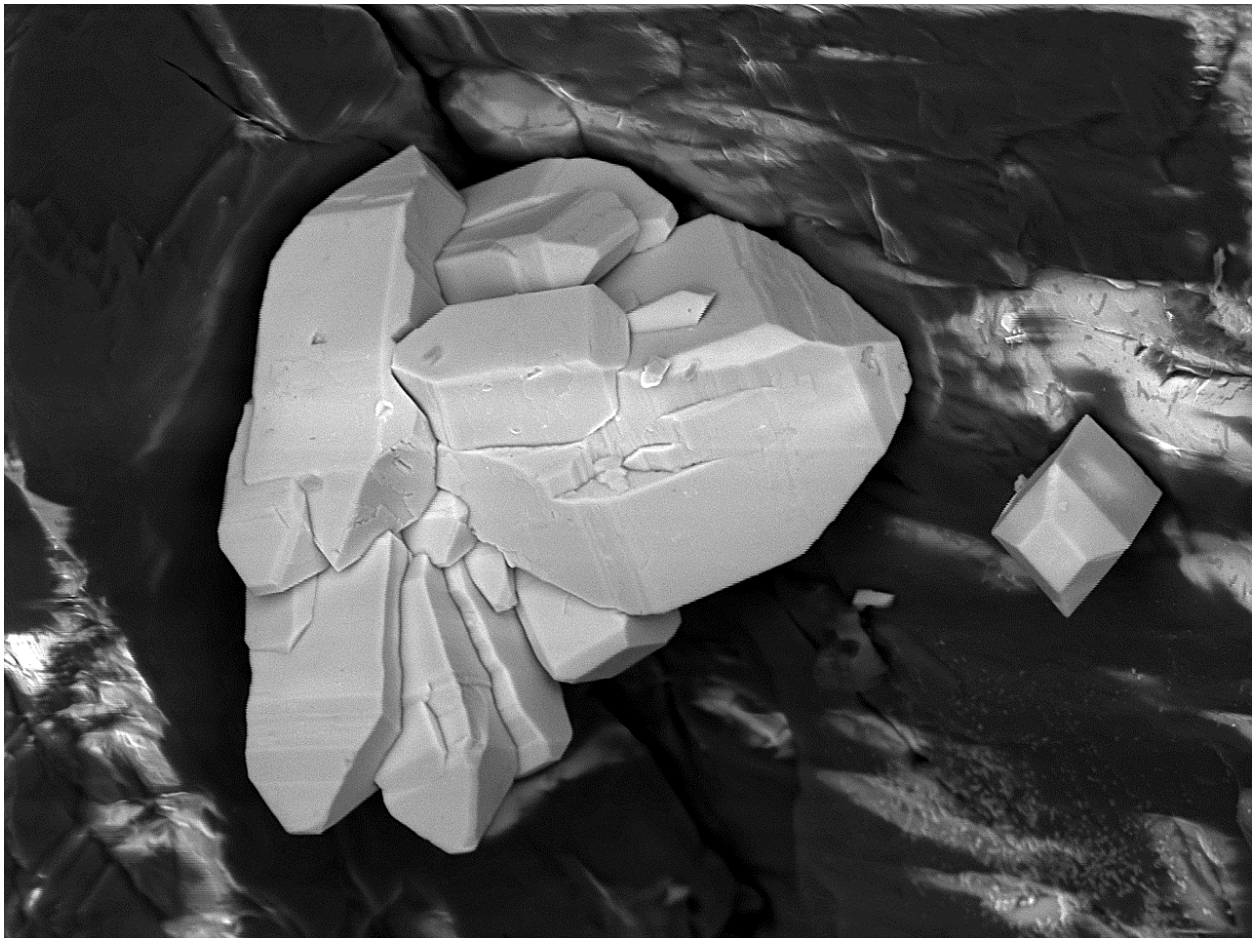


Fangite, Tl_3AsS_4



TM3030

2016/08/01

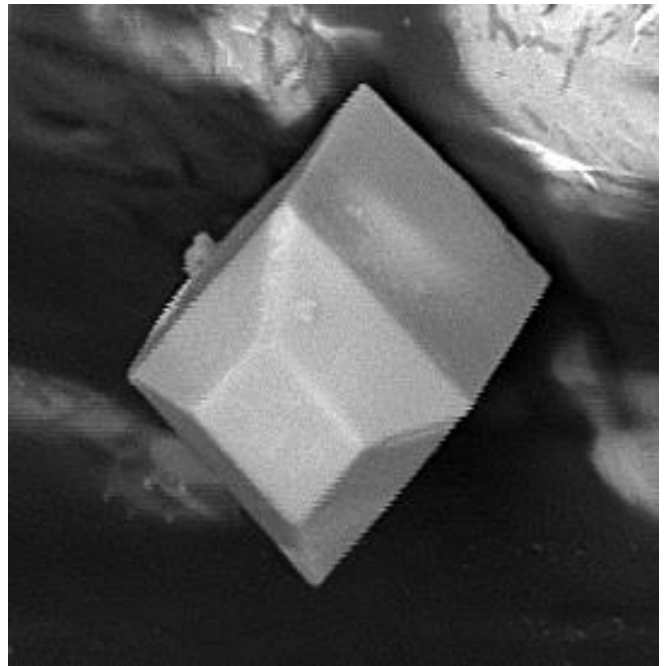
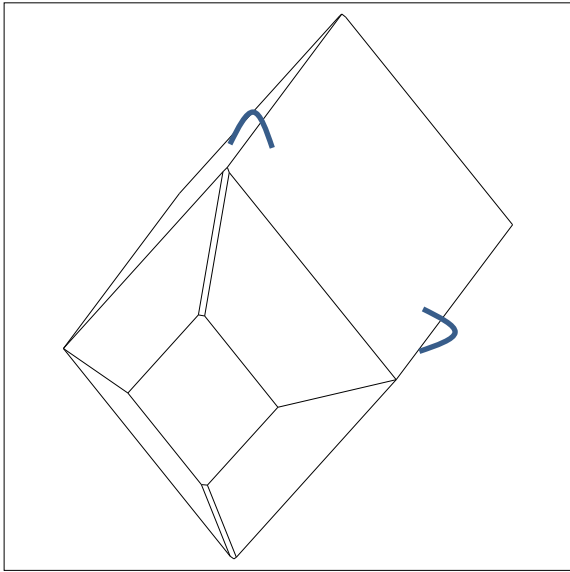
N

x1.8k

50 μ m

Color:	Red	Find Date:	N/A
Paragenesis:	Orpiment	Coll.:	P. Roth
Photo:	P. Roth	Copyright:	P. Roth
Remarks	Morphology of the crystal on the right hand side is modeled on the next page		

Fangite, Tl_3AsS_4



Fangite is orthorhombic, mmm , with the unit cell $a = 8.894$, $b = 10.855$, $c = 9.079$.

The section of this crystal not being square, we see here the prism $\{110\}$ and the bipyramid $\{111\}$ as the main forms.

Fangite, Tl_3AsS_4



TM3030

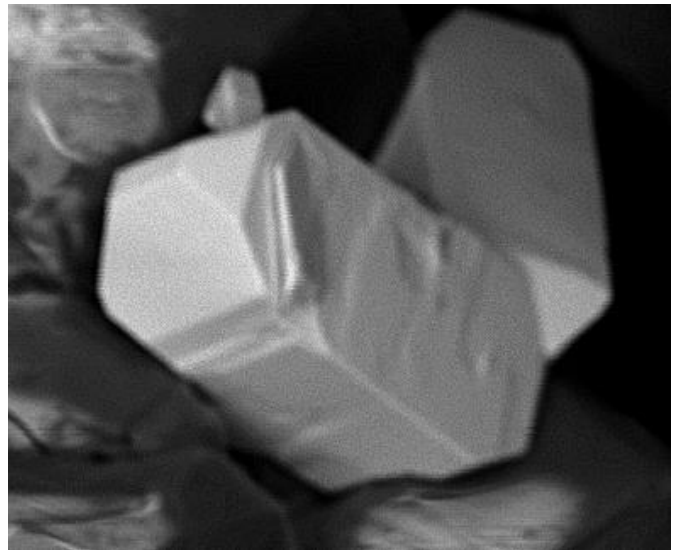
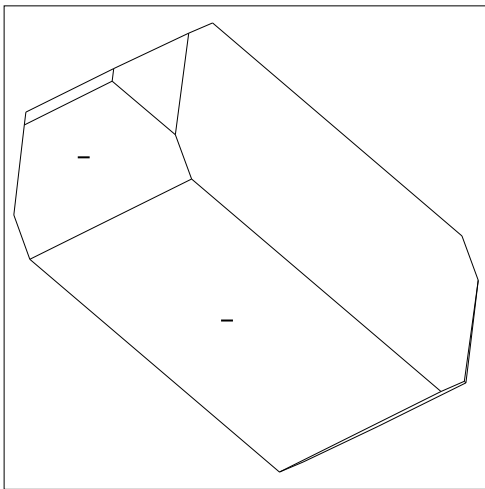
2016/08/01

N

x1.0k 100 μm

Color:	Red	Find Date:	N/A
Paragenesis:	Orpiment	Coll.:	P. Roth
Photo:	P. Roth	Copyright:	P. Roth
Remarks	Morphology of the crystal on the right hand side is modeled on the next page		

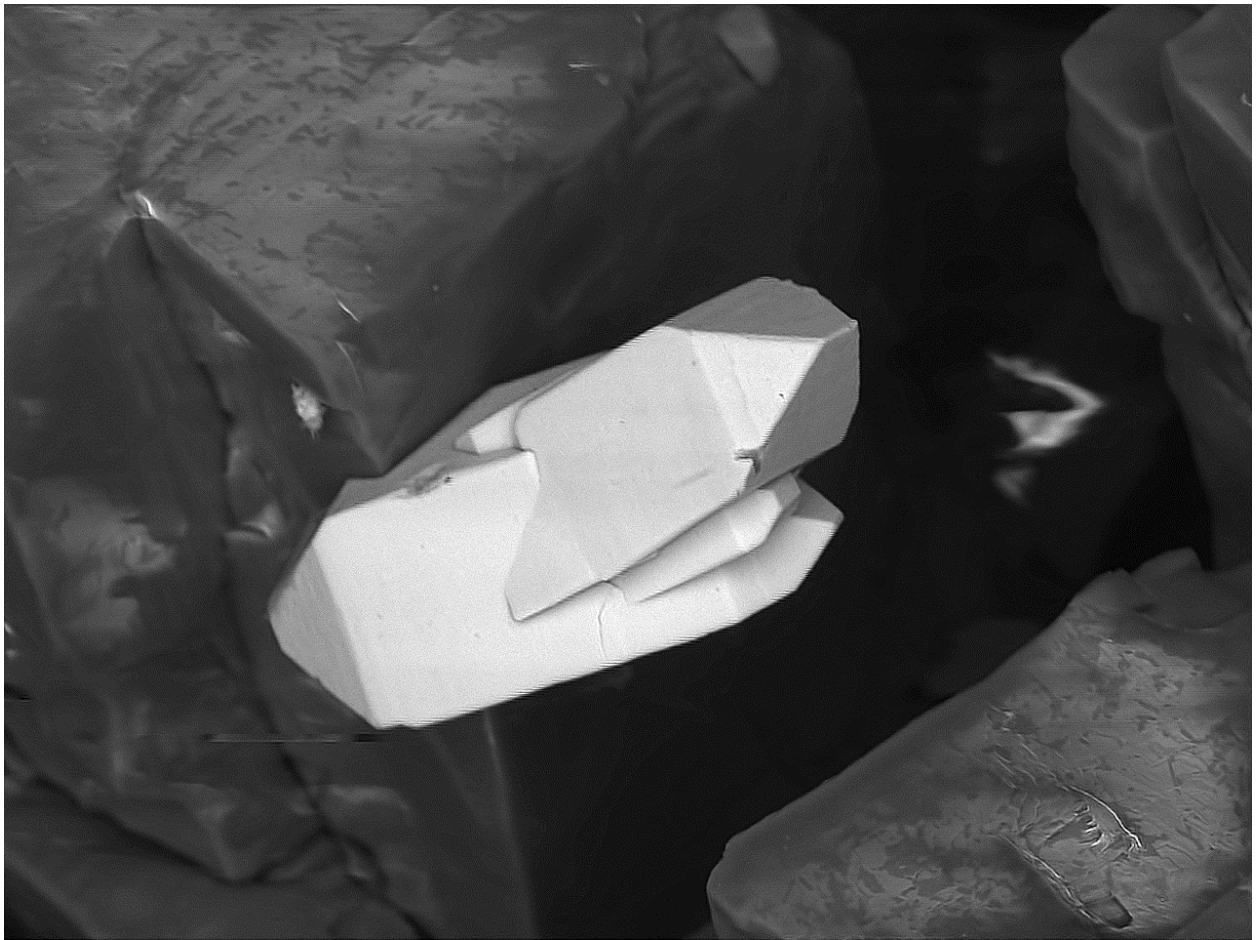
Fangite, Tl_3AsS_4



Fangite is orthorhombic, mmm , with the unit cell $a = 8.894$, $b = 10.855$, $c = 9.079$.

The section of this crystal being square, we see here the pinacoids $\{100\}$ and $\{010\}$ as well as the prisms $\{101\}$ and $\{011\}$ as the main forms.

Fangite, Tl_3AsS_4



TM3030

2016/08/01

N

x2.0k

30 μ m

Color:	Red	Find Date:	N/A
Paragenesis:	Orpiment	Coll.:	P. Roth
Photo:	P. Roth	Copyright:	P. Roth
Remarks			