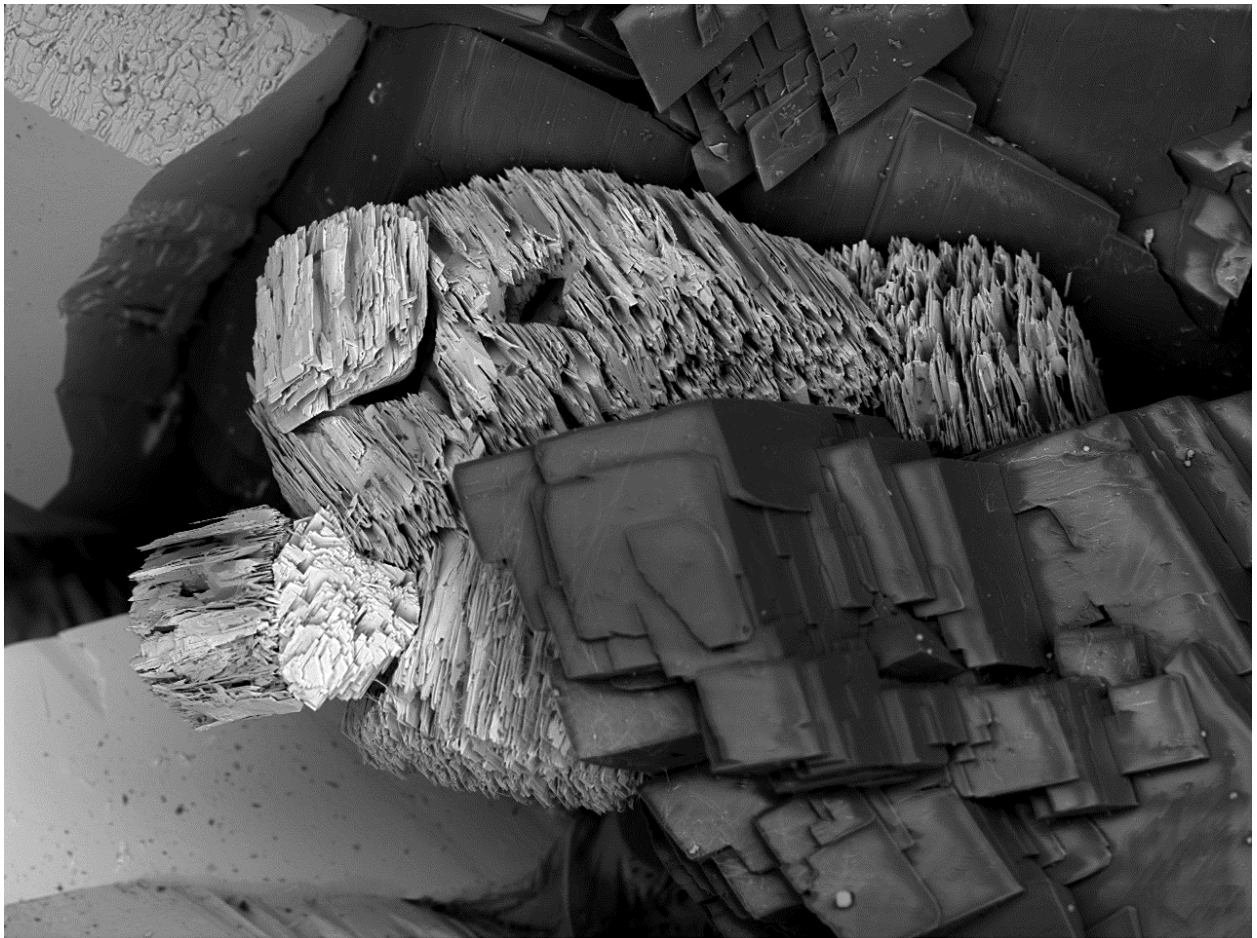


Richardsollyite, TlPbAsS_5



TM3030

2016/02/28

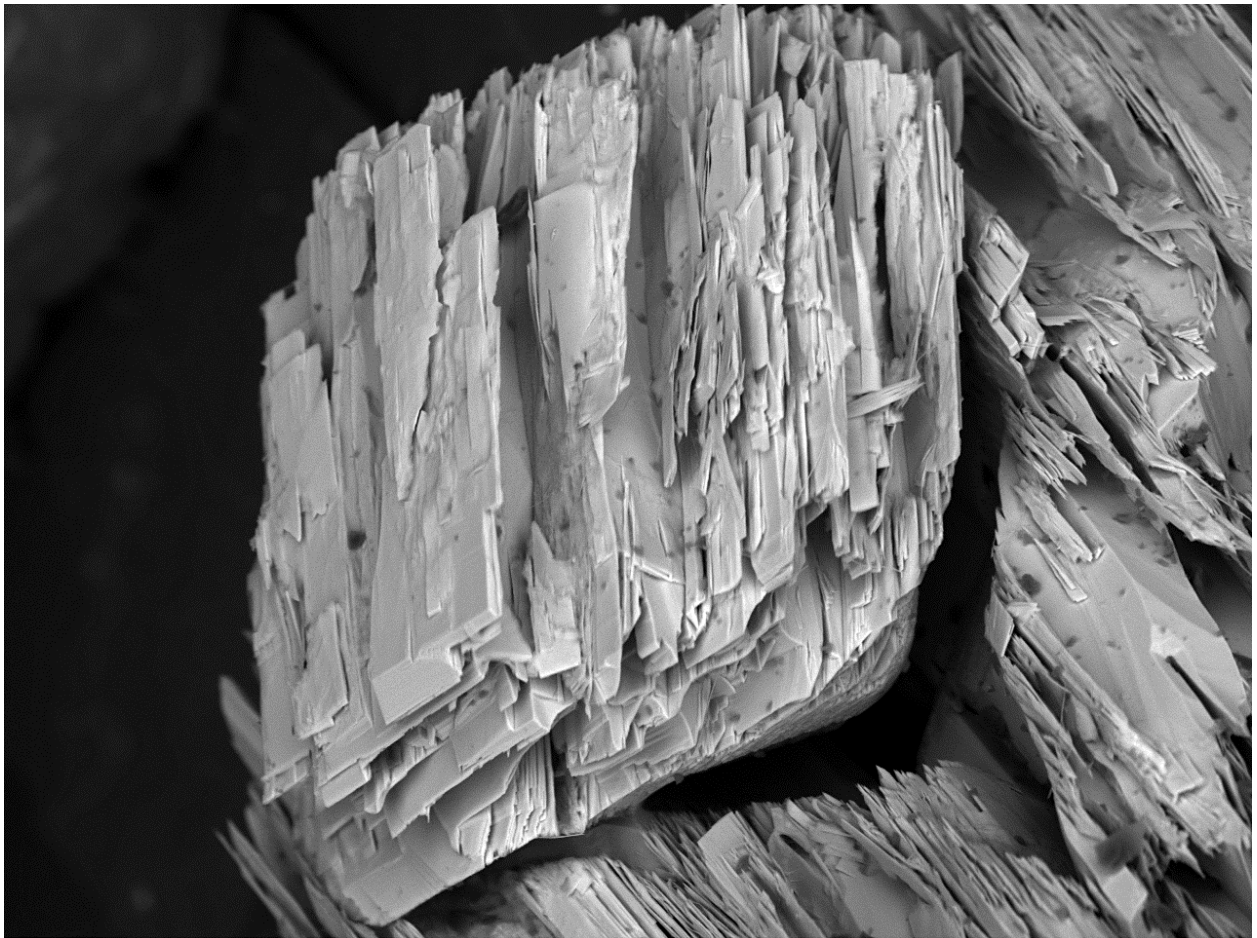
A

x200

500 μm

Color:	Brown-red with a purple hue	Find Date:	2015
Paragenesis:	Hatchite, hutchinsonite	Coll.:	P. Roth
Photo:	P. Roth	Copyright:	P. Roth
Remarks	The next page shows a detail with terminal faces		

Richardsollyite, TlPbAsS_5



TM3030

2016/02/28

N

x800

100 μm

Color:	Brown-red with a purple hue	Find Date:	2015
Paragenesis:	Hatchite, hutchinsonite	Coll.:	P. Roth
Photo:	P. Roth	Copyright:	P. Roth
Remarks	XRD confirmed identification, thanks to F. Nestola		